

**NOTES**

HEATING AND DOMESTIC HOT AND COLD WATER SERVICES PIPEWORK TO BE IN TABLE X COPPER TUBE WITH SOLDER RING FITTINGS.  
 STOP COCKS TO BE INSTALLED IN HOT AND COLD WATER SUPPLIES TO EACH FITTING OR RANGE OF FITTINGS WITHIN THE SAME ROOM.  
 ISOLATING VALVES TO BE FITTED IN HEATING FLOW AND RETURN CONNECTIONS TO THE BOILER AND IN THE BRANCHES TO EACH FLOOR.  
 A GAS COCK IS TO BE FITTED TO THE BOILER CONNECTION AND AT THE METER POSITION.  
 ALL RADIATORS TO BE FITTED WITH DRAYTON THERMOSTATIC CONTROL VALVE AND LOCKSHIELD VALVE.

Rev.	Date	Revisions
A	18.03.01	UNIT A - RAD RISE SIZED 15 HWS & 15 MCW AND RELOCATED IN UNIT B. NOTE ADDED TO UNIT A.

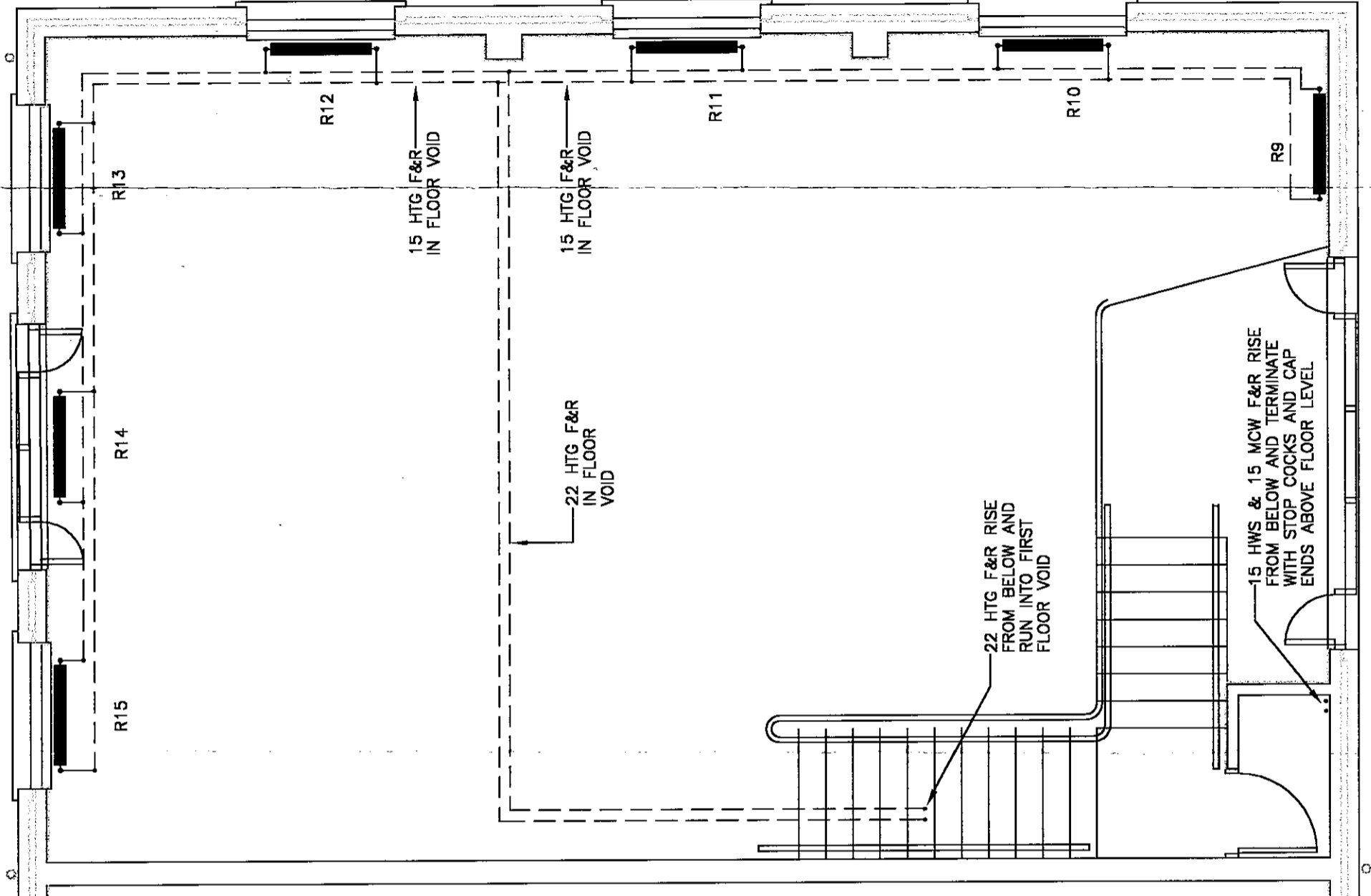
**BRUNEL**  
 ENGINEERING CONSULTANTS LTD  
 1 Gloucester Row  
 Clifton  
 Bristol BS8 4AW  
 TN. 0117 973 0835 FX. 0117 973 1897

Contract  
**REEDSPACE LIMITED**  
 PROPOSED OFFICE DEVELOPMENT  
 EASTERN ROAD, BRACKNELL

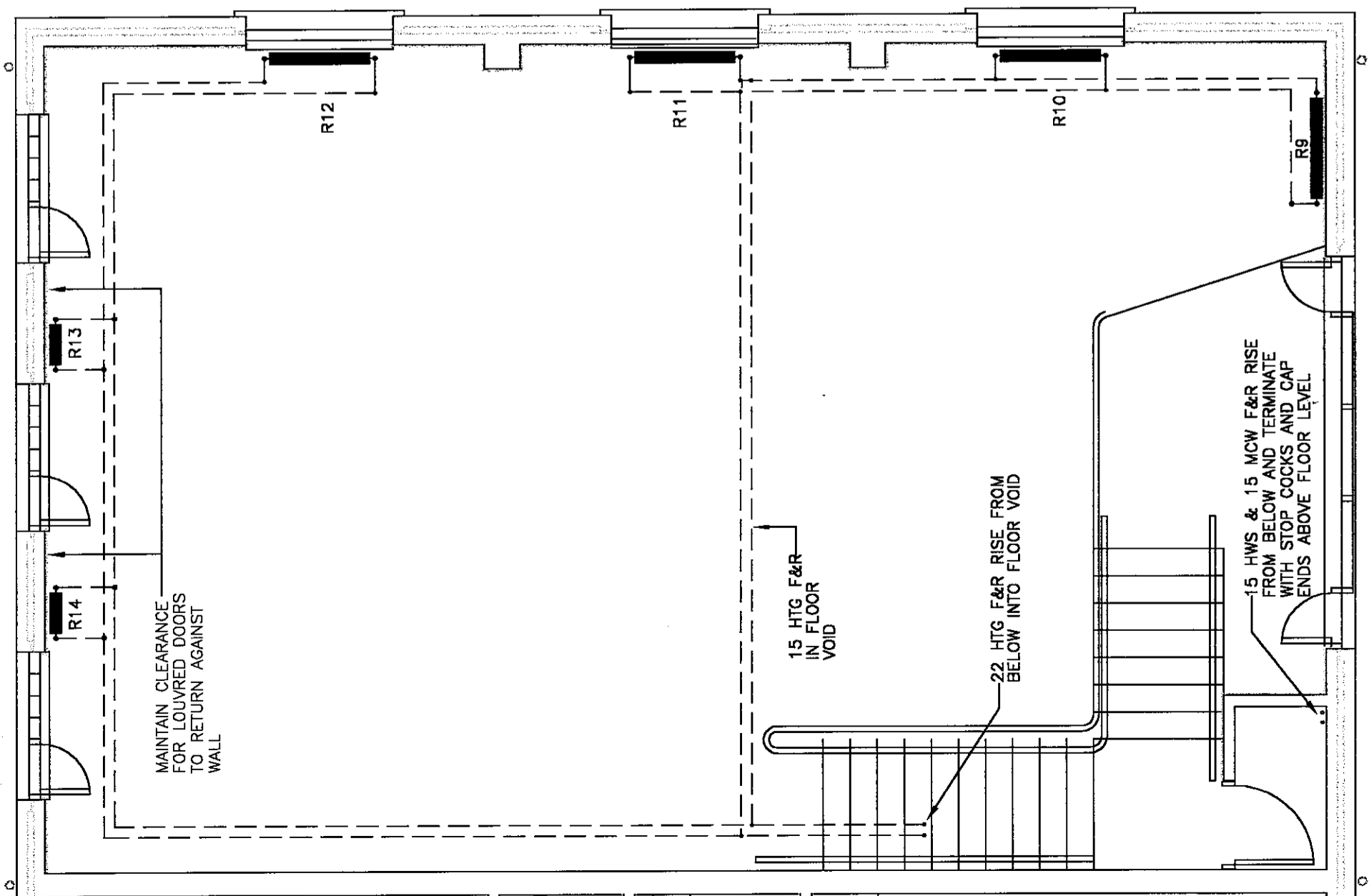
Drawing Title  
 UNITS A & E - FIRST FLOOR  
 HEATING, HOT & COLD WATER  
 AND GAS SERVICES

Drawing Status  
**TENDER/CONTRACT**

Date : DEC 2000 Scale 1 : 50  
 Drawing Number  
 9193/A-E/FF/M1  
 Rev.  
 A



UNIT E - FIRST FLOOR PLAN



UNIT A - FIRST FLOOR PLAN

21.3.01