

NOTES

HEATING AND DOMESTIC HOT AND COLD WATER SERVICES PIPEWORK TO BE IN TABLE X COPPER TUBE WITH SOLDER RING FITTINGS.
 STOP COCKS TO BE INSTALLED IN HOT AND COLD WATER SUPPLIES TO EACH FITTING OR RANGE OF FITTINGS WITHIN THE SAME ROOM.
 ISOLATING VALVES TO BE FITTED IN HEATING FLOW AND RETURN CONNECTIONS TO THE BOILER AND IN THE BRANCHES TO EACH FLOOR.
 A GAS COCK IS TO BE FITTED TO THE BOILER CONNECTION AND AT THE METER POSITION, ALL RADIATORS TO BE FITTED WITH DRAYTON THERMOSTATIC CONTROL VALVE AND LOCKSHIELD VALVE.

BOILER CONNECTIONS :-

- 22 HTG F&R
- 15 MCW INLET
- 15 GAS
- 15 HWS FLOW
- ALL THE ABOVE WITH ISOLATING VALVES, 15 PRESSURE RELIEF DISCHARGE CONNECTION TO BE RUN TO DISCHARGE IN A SAFE LOCATION.

Rev.	Date	Revisions
B	14.02.02	ELECTRICITY METER DELETED
A	13.03.02	WATER METER RELOCATED AND 15 MCW ADDED FOR DISHWASHER.

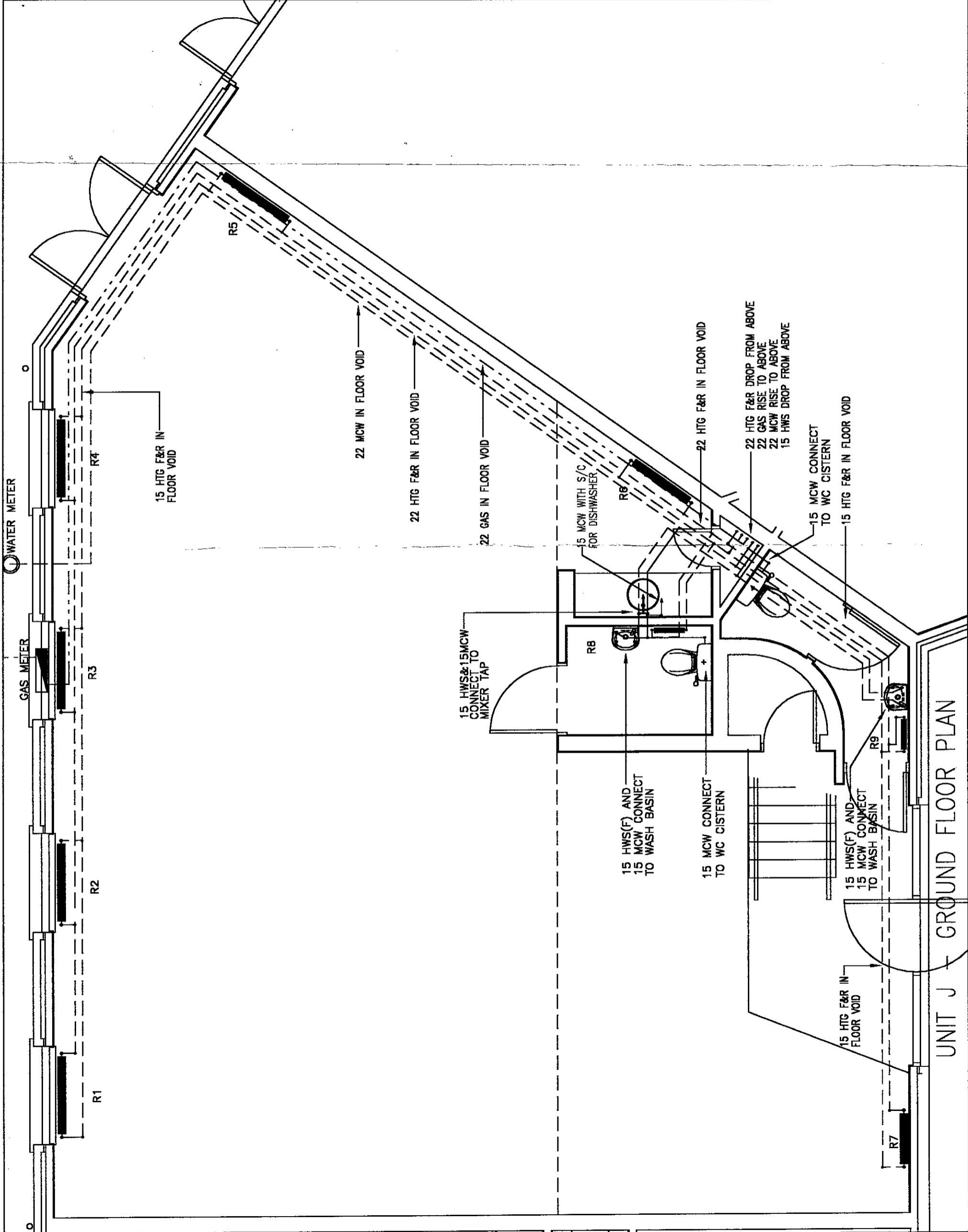
BRUNEL
 ENGINEERING CONSULTANTS LTD
 1 Gloucester Row
 Clifton
 Bristol BS8 4AW
 TN. 0117 973 0835 FX. 0117 973 1897

Contract
REEDSPACE LIMITED
 PROPOSED OFFICE DEVELOPMENT
 EASTERN ROAD, BRACKNELL

Drawing Title
 UNIT J - GROUND FLOOR
 HEATING, HOT & COLD WATER
 AND GAS SERVICES
 14.2.02

Drawing Status
TENDER/CONTRACT

Date : DEC 2000 Scale 1 : 50
 Drawing Number
 9193/J/GF/M1
 Rev.
B



UNIT J - GROUND FLOOR PLAN