

NOTES

HEATING AND DOMESTIC HOT AND COLD WATER SERVICES PIPEWORK TO BE IN TABLE X COPPER TUBE WITH SOLDER RING FITTINGS. STOP COCKS TO BE INSTALLED IN HOT AND COLD WATER SUPPLIES TO EACH FITTING OR RANGE OF FITTINGS WITHIN THE SAME ROOM. ISOLATING VALVES TO BE FITTED IN HEATING FLOW AND RETURN CONNECTIONS TO THE BOILER AND IN THE BRANCHES TO EACH FLOOR. A GAS COCK IS TO BE FITTED TO THE BOILER CONNECTION AND AT THE METER POSITION. ALL RADIATORS TO BE FITTED WITH DRAYTON THERMOSTATIC CONTROL VALVE AND LOCKSHIELD VALVE.

Rev.	Date	Revisions
B	12.02.02	ELECTRICITY METER DELETED AND GAS METER RELOCATED TO BE AS SHOWN ON THIS LAYOUT
A	15.03.01	WATER METER RELOCATED

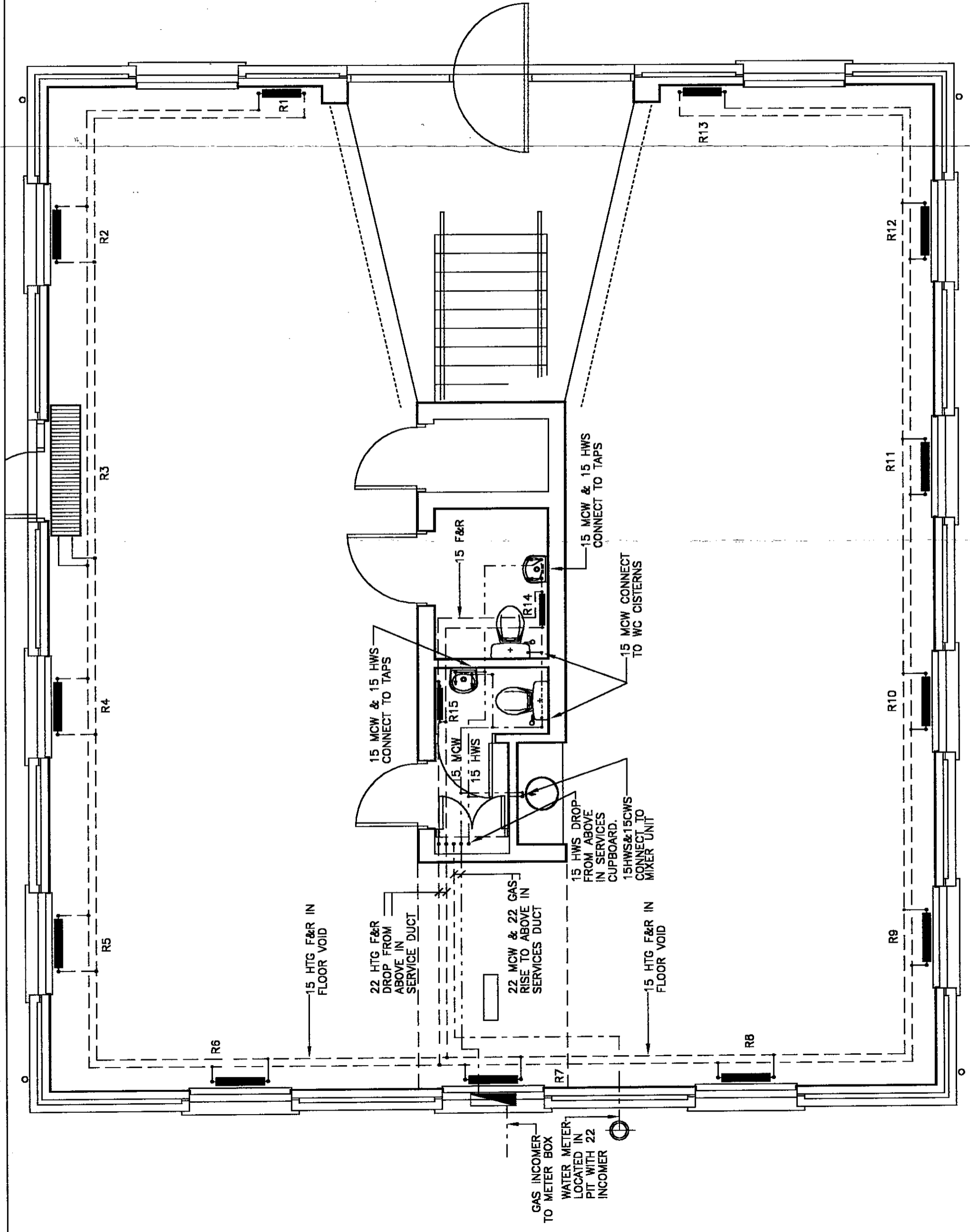
BRUNEL
ENGINEERING CONSULTANTS LTD
1 Gloucester Row
Clifton
Bristol BS8 4AW
TN. 0117 973 0835 FX. 0117 973 1887

Contract
REEDSPACE LIMITED
PROPOSED OFFICE DEVELOPMENT
EASTERN ROAD, BRACKNELL

Drawing Title
**UNIT C - GROUND FLOOR
HEATING, HOT & COLD WATER
AND GAS SERVICES**
14.12.02

Drawing Status
TENDER/CONTRACT

Date : DEC 2000 Scale 1 : 50
Drawing Number
9193/C/GF/M1
Rev.
B



UNIT C - GROUND FLOOR PLAN